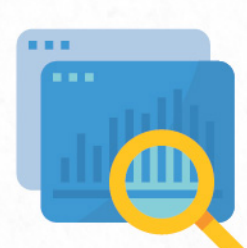


Master of Economics Advanced Research Stream

Master of Economics, offering 4 streams for 2022 intake:



Advanced Research - Stresses on the cultivation of research capabilities. Students with a strong academic inclination will be offered exposure to research activities.



Data Analysis



Policy Analysis

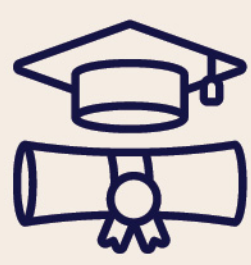


Theory

The Advanced Research Stream is research focused and students are expected to produce one research paper of good quality which can be further developed into one of their PhD thesis chapters.

Students will take courses with PhD students and can work on their thesis under the supervision of faculty members in the economics area. They will also provide research assistance to their supervisors and other members of this area.

ADMISSION REQUIREMENTS



Hold a recognised Bachelor's degree or equivalent, with strong academic background



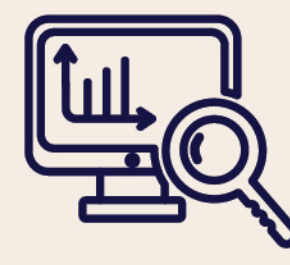
Two referees statements regarding the suitability for the programme from academic professors



A 2 page long Research Statement, expressing your research of interests and skills



Obtain an English test score if you are not from an English-medium university, with a minimum score requirement of: TOEFL (80) or IELTS (6)



Previous research works

Scholarship / Financial Aid*

Full scholarship will be awarded to truly outstanding candidates admitted to the Advanced Research Stream

Research support, HK\$10,000/month for the first 6 months of Year 2

Research assistantship, additional financial support for the second 6 months of Year 2

1 PHD

Priority admission to HKU PhD programme

3 TRAINING

Cutting-edge research training and guidance on PhD study

2 SUPERVISION

Personalised supervisor matching with faculty members and research assistantship

4 RESEARCH

Active researchers environment with long-term collaborative research within and outside the faculty

Master of Economics (Recommended Duration)

Year 1: Core courses and stream core courses

Year 2: Research Paper and elective courses

* Subject to the final approval of the university